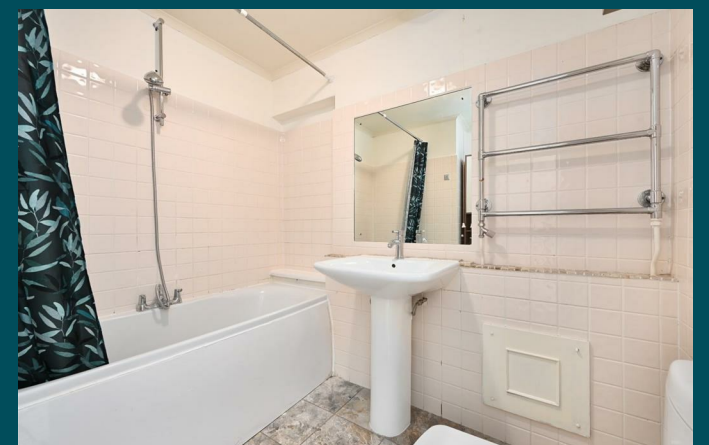




Queens Gardens

Hove, BN3 2LP



Queens Gardens

Hove, BN3 2LP

Offers in excess of £425,000

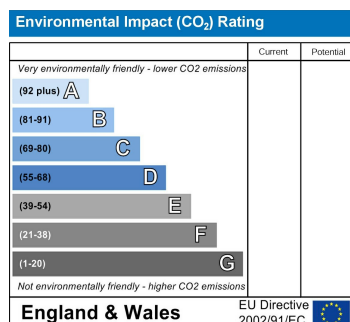
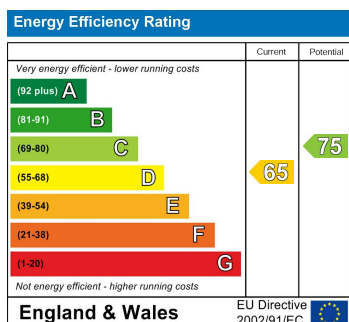
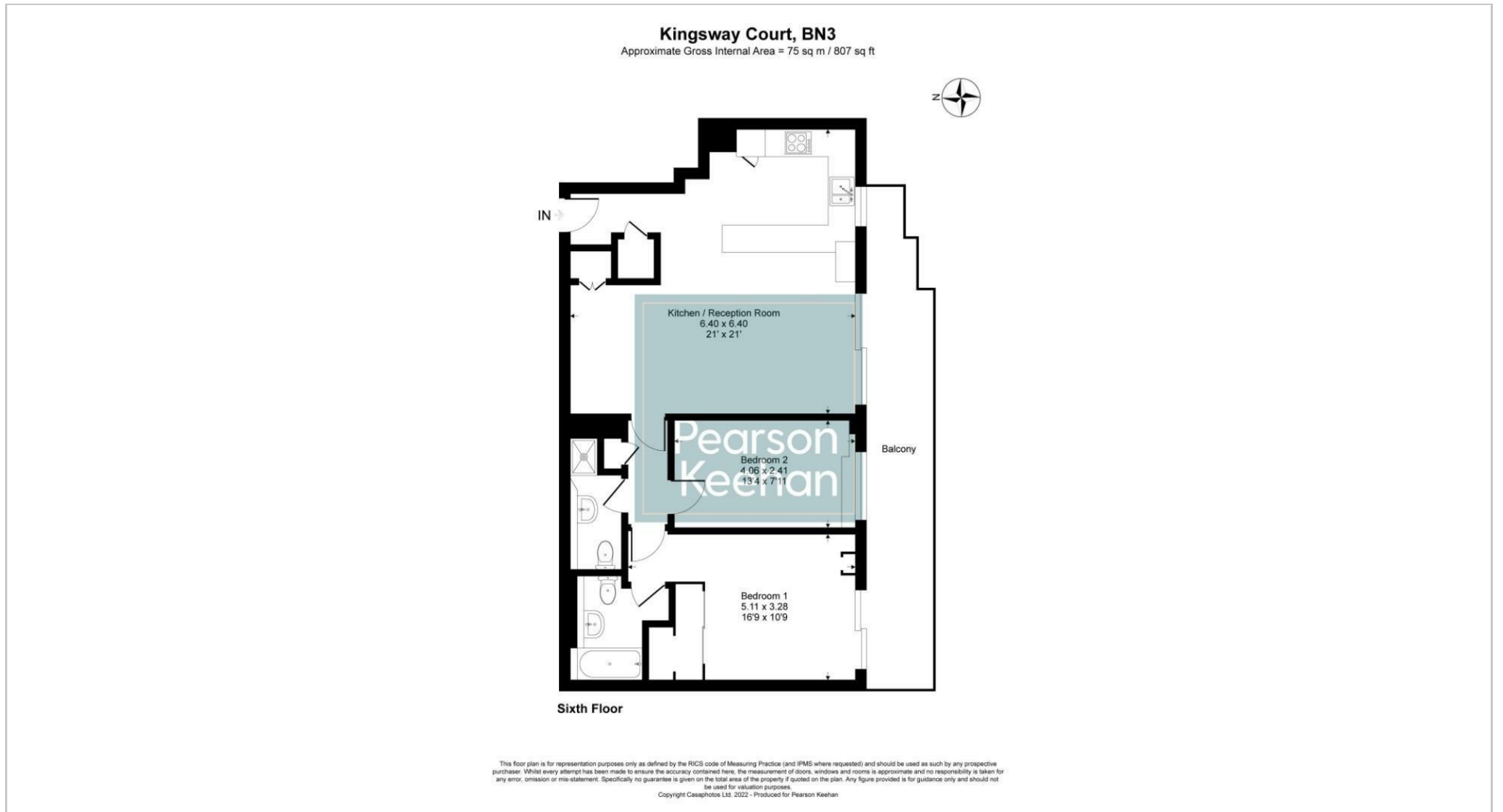
Guide Price: £425,000 - £450,000

A lovely two bedroom sixth floor purpose built apartment situated on Hove Seafront directly opposite Hove Lawns and boasts stunning direct sea views. Kingsway Court is positioned between First and Second Avenue making the property just moments from a wide range of local amenities, coffee shops, bars and restaurants on Church Road as well as being within easy reach to Hove Railway station.

The apartment itself briefly comprises of two double bedrooms of which are both south facing enjoying direct sea views, with the main bedroom also benefiting en-suite bathroom facilities, family shower room, spacious open plan living room with fitted kitchen which boasts patio sliding doors out onto the south facing balcony that encompasses beautiful uninterrupted sea views completing the accommodation.

The building also benefits from residents caretaker and passenger lift. The property is sold with the added benefit of no onward chain.

Tenure: Leasehold
 Lease: 999yrs from 1963
 Ground Rent: £50pa
 Service Charge: £5019.28
 Service Charge reviewed annually according to the budget



Pearson Keehan